

GP Band Trip 2025 - Disneyland

Spring Break
April 7th – 11th



2025 GP Band Trip Summary

- Transportation to/from GPHS to SeaTac Airport
- Roundtrip airfare from Seattle to LA Airports on Alaska Airlines
- Transportation to/from Airport to Hotel
- 5 Days/4 Nights at the Fairfield Inn - Anaheim
- Simple breakfast each day at hotel
- 4 Day Disney Imagination Flex Pass that includes participation in a performance in California Adventure Park and a Instrumental Soundstage Workshop.
- Travel Ensemble Performance Polo
- Monday = Fun-day & Team Dinner
- Instrument transportation to/from GPHS to Fairfield Inn - Anaheim

2025 GP Band Trip Itinerary

April 7th, Monday *Departure Day*

- Seattle to Ontario Alaska Airlines 7:35am – 10:09am
- Students responsible for lunch/snacks on their own
- Camelot Golfland
- Newport Beach
- Team dinner at Oggi's Pizza
- Check into hotel / unload instruments
- Visit Downtown Disney for fireworks show

2025 GP Band Trip Itinerary

April 8th, Tuesday *Performance Day*

- Simple breakfast at hotel
- Load / unload instruments
- Performance details TBA
- Visit California Adventure or Disneyland
- Students responsible for lunch/dinner/snacks on their own

2025 GP Band Trip Itinerary

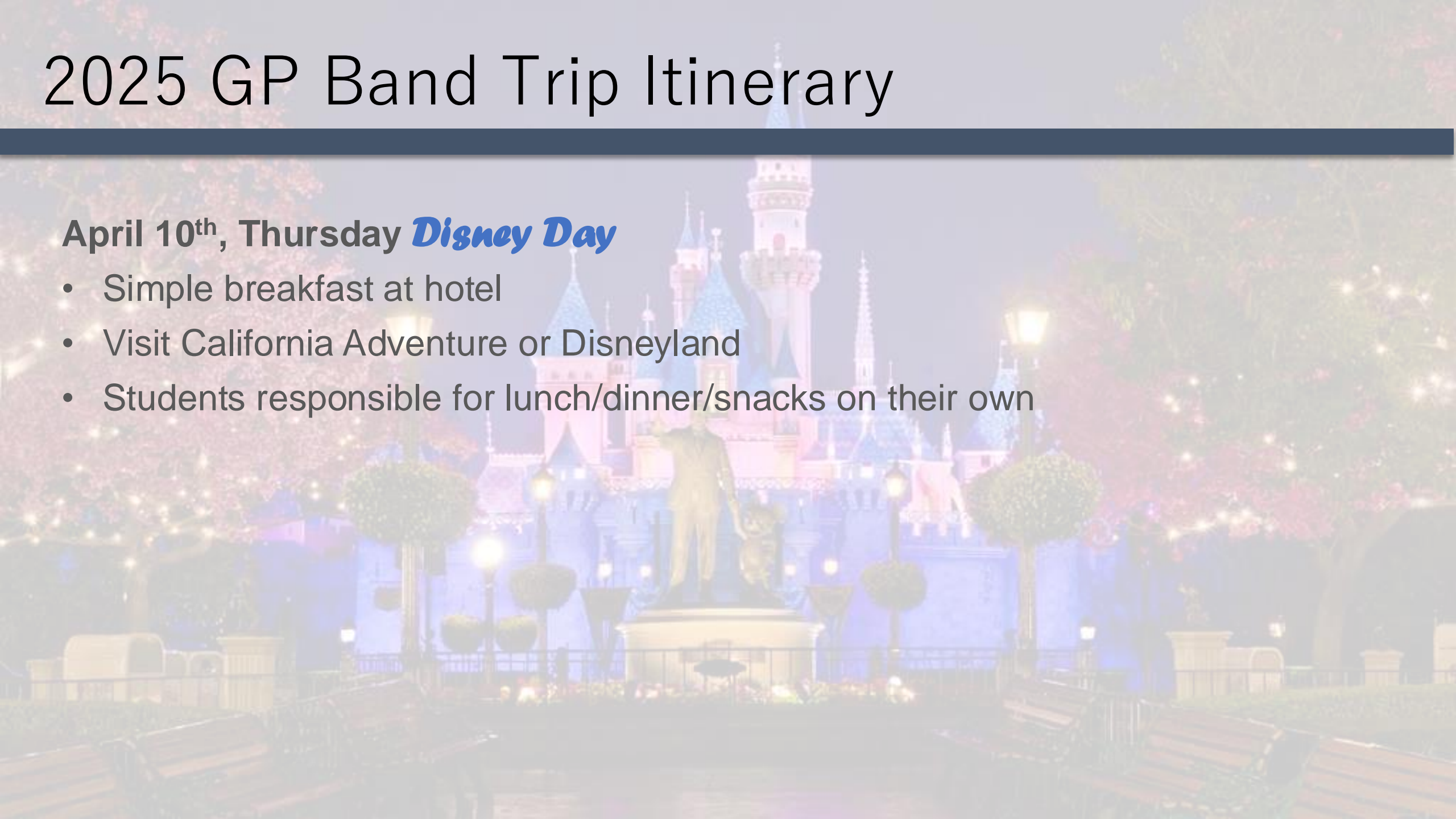
April 9th, Wednesday *Soundstage Workshop Day*

- Simple breakfast at hotel
- Load / unload instruments
- Instrumental Soundstage Workshop details TBA
- Visit California Adventure or Disneyland
- Students responsible for lunch/dinner/snacks on their own

2025 GP Band Trip Itinerary

April 10th, Thursday *Disney Day*

- Simple breakfast at hotel
- Visit California Adventure or Disneyland
- Students responsible for lunch/dinner/snacks on their own



2025 GP Band Trip Itinerary

April 11th, Friday *Last Day*

- Simple breakfast at hotel
- Check out of hotel / load instruments
- Visit California Adventure or Disneyland
- Students responsible for lunch/dinner/snacks on their own
- Meet at hotel for departure
- John Wayne Airport to Seattle Alaska Airlines 4:35pm – 7:23pm
- Burbank Airport to Seattle Alaska Airlines 5:20pm – 8:00pm
- Everyone will load busses to return to GPHS

2025 GP Band Trip Cost & Payment Plan

- Approximately \$1605/student
- Approximately \$895/chaperone

Payment Plan**

- **Nov 1st** \$200 deposit/per participant (non-refundable)
- **Dec 1st** \$400 payment
- **Jan 3rd** \$400 payment
- **Feb 7th** remaining balance due

****ALL Payments made to GP Bookkeeper online or in person****

2025 GP Band Trip Additional Info

- Eligible students must be enrolled in a GP Band Class AND have purchased a 2024-25 ASB Card
- Required paperwork for students
- 10 parent chaperones needed
- Trip deviation requests due in writing by November 1st
- Travel Insurance
- Visit BIG TRIP info page grizzlyband.org